

Harbor Management Plan

Introduction

Article 42, Waterfront Revitalization of Coastal Areas and Inland Waterways, of the New York State Executive Law, Section 922, Comprehensive harbor management plans, –authorizes local governments to prepare a Harbor Management Plan (HMP) as part of their Local Waterfront Revitalization Program (LWRP). The HMP has been integrated into this LWRP. An HMP addresses conflict, congestion, and competition for space in the use of a community’s harbors, surface waters and underwater lands of the state within a city, town or village or abounding a city, town or village to a distance of fifteen hundred feet from shore.”¹ An HMP is a required element for the approval of a LWRP. The Harbor Management Area for the City of Poughkeepsie extends to the city boundary at the center of the Hudson River.

Section 1 of this LWRP identifies the Harbor Management Area Boundary, *Section II (Harbor Management Area: Uses and Support Facilities)* identifies the uses and support facilities for the Harbor Management Area and identification and analysis of issues of local and regional importance, *Section III* contains policies which provide guidance for both the LWRP area and the HMP area, *Section IV* identifies specific implementation for Harbor Management Projects, *Section V* recommends the implementation of laws and regulations, projects and management structure, *Section VI* identifies the authorities of New York State Agencies, and Appendix V contains a summary of the *Poughkeepsie Local Waterfront Revitalization Program Survey* which provided input about details to include in the proposed projects.

City of Poughkeepsie Harbor Management Area Boundary

The geographic description of the Harbor Management Area is provided in *Section 1* and identified on Figure 1-2 which also depicts the Waterfront Revitalization Area (WRA) boundary.

The Poughkeepsie Harbor Management Area begins at the Hudson River shoreline and extends to the City boundary in the center of the Hudson River. This area includes a channel for recreational craft, a designated Cable and Pipeline Area, and two bridge spans—the Mid-Hudson Bridge and the Walkway Over the Hudson Bridge.

Inventory and Analysis of Existing Conditions

Pursuant to 19 NYCRR Part 603.3 the contents of the HMP have been integrated into the LWRP document, primarily in Section 2. Information on the required topics, issues, etc. can be found in the document as illustrated in figure A-IV-1.

Water Use Plan

The projects proposed to be developed in the City of Poughkeepsie HMP area, to expand or improve water-dependent uses or to protect the water quality of the Hudson River, are described in Section IV: Proposed Land and Water Uses and Proposed Projects, Proposed Harbor Management Projects.

¹ New York Law: Executive Article 42: (910 – 923) Waterfront Revitalization of Coastal Areas and Inland Waterways.

Table A-IV-1: Contents of the City of Poughkeepsie Harbor Management Plan

19 NYCCR 603.3 HMP Items Covered in LWRP		Section & Page
(a)	Identification of the HMP boundary.	Section I. Page I-4, Figure I-2
(b)	An inventory and analysis of existing uses, features and conditions in this area.	Section II: Land-Side: Uses, Public Access and Infrastructure Page II-5 – II-54; Figures II-2 - II-6 Section II: Harbor Management Area: Uses and Support Facilities Page II-55 – II-67 Section II: Natural Resources and Habitats Page II-68 – II-86; Figures II-12 – II-16 Section II: Habitat and Wetlands Page II-68 – II-71; Figures II-15 – II-16
(c)	Identification and discussion of issues of local importance.	Section II: Land-Side: Uses, Public Access and Infrastructure Page II-22 – II-46; Figures II-4 - II-7 Page II-50 – II-52; Figure II-9 Section II: Harbor Management Area: Uses and Support Facilities Page II-55 – II-57 Section II: Natural Resources and Habitats Page II-68 – II-76; Figures II-12 – II-13 Page II-87 – II-89; Figures II-15 and II-16 Section III: State and Local Policies Policy 1, Page III-1 – III-3 Policy 5, Page III-9 – III-11 Policy 7, Page III-12 – III-14 Policy 11, Page III-17 – III-18 Policy 13, Page III-18 – III-19 Policy 18, Page III-22 Policy 19 Page III-22 – III-24 Policy 24, Page III-32 – III-34 Policy 25, Page III-34 – III-36 Policy 26, Page III-36 – III-38 Policy 35, Page III-43 – III-44 Policy 38, Page III-45
(d)	Identification and discussion of issues of regional importance	Section IV: Proposed Area-Wide Projects Page IV-36 – IV-49 Section VII: Consultation Page VII-1 – VII-6
(e)	Discussion of opportunities, long and short-term goals and objectives	Section II: Land-Side: Uses, Public Access and Infrastructure

Table A-IV-1: Contents of the City of Poughkeepsie Harbor Management Plan

19 NYCCR 603.3 HMP Items Covered in LWRP		Section & Page
		Page II-5 – II-10 Section IV: Proposed Land and Water Uses and Proposed Projects Page IV-7 – IV-49
(f)	Identification of conditions which operate as constraints on utilization of underwater lands and navigable waters by the public.	Section II: Harbor Management Area: Uses and Support Facilities Page II-59 – II-60; Figure II-10 Page II-61 – II-65; Figure II-11
(g)	Discussion of water dependent uses.	Section II: Land-Side: Uses, Public Access and Infrastructure Page II-17 – II-19; Figures II-4 Section II: Harbor Management Area: Uses and Support Facilities Page II-55 – II-57
(h)	Identification and discussion of economic, cultural and social considerations fundamental to responsible management of underwater lands and navigable waters	Section II: Harbor Management Area: Uses and Support Facilities Pages II-55 - II-67, Figures II-10 and II-11
(i)	Water use plan	Section II: Harbor Management Area: Uses and Support Facilities Pages II-55 - II-67, Figures II-10 and II-11
(j)	Specification of policies concerning present and future use and management of such areas	Section III: State and Local Policies Policy 4, page III-8 – III-9 Policy 7, page III-12 – III-14 Policy 19, page III-22 – III-24 Policy 20, page III-25 – III-27 Policy 21, page III-27 – III-28 Policy 22, page III-28 – III-30
(k)	Identification of capital projects necessary to implement the HMP	Section IV: Proposed Harbor Management Projects Page IV-23 – IV-27
(l)	Specification of existing and proposed techniques and authorities to implement the HMP.	Section V: Techniques for Local Implementation Page V-2 – V-3
(m)	To the extent commensurate with the particular circumstances of the city, an HMP shall address the following considerations:	
	(1) Conflict and competition for space among the uses and users of harbors, surface waters and underwater lands.	Section II: Harbor Management Area: Uses and Support Facilities Page II-55 – II-57

Table A-IV-1: Contents of the City of Poughkeepsie Harbor Management Plan

19 NYCCR 603.3 HMP Items Covered in LWRP	Section & Page
(2) Regulation of the construction, size and location of wharves, docks, moorings, piers, jetties, platforms, breakwaters or other structures, whether temporary or permanent.	Section V: Techniques for Local Implementation Page V-1 – V-3
(3) Regional needs for any of the various uses or users likely to be attracted to the particular qualities of the area.	Section II: Land-Side: Uses, Public Access and Infrastructure Page II-50 – II-52; Figure II-9 Page II-68 – II-76; Figure II-12 and II-13 Section IV: Proposed Harbor Management Projects Page IV-41 – IV-47
(4) Where applicable:	
(i) Commercial shipping	Not Applicable
(ii) Recreational boating	Section II: Harbor Management Area: Uses and Support Facilities Page II-55 – II-60
(iii) Commercial and recreational fishing and shellfishing	Section II: Land-Side: Uses, Public Access and Infrastructure Page II-22, II-24 – II-25, II-47 Section II: Harbor Management Area: Uses and Support Facilities Page II-61 Section II: Natural Resources and Habitats Page II-87
(iv) Aquaculture and mariculture	Not Applicable
(v) Waste management	Section II: Land-Side: Uses, Public Access and Infrastructure Page II-37 Section II: Natural Resources and Habitats Page II-82 Section III: State and Local Policies Policy 8, Page III-14 Policy 32, Page III-42 Policy 33, Page III-42 Policy 34, Page III-43 Policy 39, Page III-45
(vi) Mineral extraction	Section III: State and Local Policies Policy 15, Page III-19 - III-20

Table A-IV-1: Contents of the City of Poughkeepsie Harbor Management Plan

19 NYCCR 603.3 HMP Items Covered in LWRP	Section & Page
(vii) Dredging	<p>Section II: Harbor Management Area: Uses and Support Facilities Page II-60 – II-61</p> <p>Section III: State and Local Policies Policy 15, Page III-19 - III-20 Policy 35, Page III-43 – III-44</p>
(viii) Public access	<p>Section II: Land-Side: Uses, Public Access and Infrastructure Page II-22 – II-31, Figures II-5 and II-6</p> <p>Section III: State and Local Policies Policy 19, Page III-22 – III-24 Policy 20, Page III-25 – III-27</p> <p>Section IV: Proposed Land and Water Uses and Proposed Projects Page IV-7 – IV-16 Page IV-23 – IV-27 Page IV-28 – IV-31 Page IV-36 – IV-38</p>
(ix) Recreation	<p>Section II: Land-Side: Uses, Public Access and Infrastructure Page II-22 – II-30, Figures II-4 and II-5</p> <p>Section IV: Proposed Land and Water Uses and Proposed Projects Page IV-14 – IV-15 Page IV-17 – IV-18 Page IV-28 – IV-31</p>
(x) Habitats and other natural resource protection	<p>Section II: Natural Resources and Habitats Page II-87 – II-89, Figures II-15 and II-16</p> <p>Section III: State and Local Policies Policy 44, Page III-47 – III-48</p> <p>Section IV: Proposed Land and Water Uses and Proposed Projects Page IV-41 – IV-47</p>
(xi) Water quality	<p>Section II: Natural Resources and Habitats Page II-80 – II-86, Figure II-14</p> <p>Section III: State and Local Policies Policy 30, Page III-41 Policy 31, Page III-41 – III-42 Policy 33, Page III-42</p>

Table A-IV-1: Contents of the City of Poughkeepsie Harbor Management Plan

19 NYCCR 603.3 HMP Items Covered in LWRP	Section & Page
	Policy 34, Page III-43 Policy 35, Page III-43 – III-44 Policy 36, Page III-44 Policy 37, Page III-44 – III-45 Policy 38, Page III-45 Policy 39, Page III-45 – III-46 Policy 40, Page III-46 Section IV: Proposed Land and Water Uses and Proposed Projects Page IV-32 – IV-33 Page IV-39 – IV-45
(xii) Open space	Section II: Land-Side: Uses, Public Access and Infrastructure Page II-22 – II-30, Figures II-5 Section IV: Proposed Land and Water Uses and Proposed Projects Page IV-14 – IV-16 Page IV-28 – IV-31
(xiii) Aesthetic values	Section II: Land-Side: Uses, Public Access and Infrastructure Page II-50 – II-53, Figure II-9 Section III: State and Local Policies Policy 24, Pages III-32 – III-34 Policy 25, Pages III-34 – III-36
(xiv) Water Dependent Uses	Section II: Land-Side: Uses, Public Access and Infrastructure Page II-17 – II-19, Figure II-4 Section II: Harbor Management Area: Uses and Support Facilities Page II-55 – II-59 Section III: State and Local Policies Policy 2, Pages III-4 – III-7 Policy 21, Pages III-27 – III-28 Policy 22, Pages III-28 – III-30
(xv) Common Law riparian or littoral rights	Section II: Harbor Management Area: Uses and Support Facilities Page II-55 – II-59, Figure II-12
(xvi) Public interests, including interests under the Public Trust Doctrine	Section II: Harbor Management Area: Uses and Support Facilities Page II-62 – II-67, Figure II-11

Table A-IV-1: Contents of the City of Poughkeepsie Harbor Management Plan

19 NYCCR 603.3 HMP Items Covered in LWRP		Section & Page
(n)	HMPs shall also consider other circumstances determined to be of significance by the Secretary of State, and HMPs may also consider those determined to be of significance by the city, town or village.	All sections, policies & projects cited above.

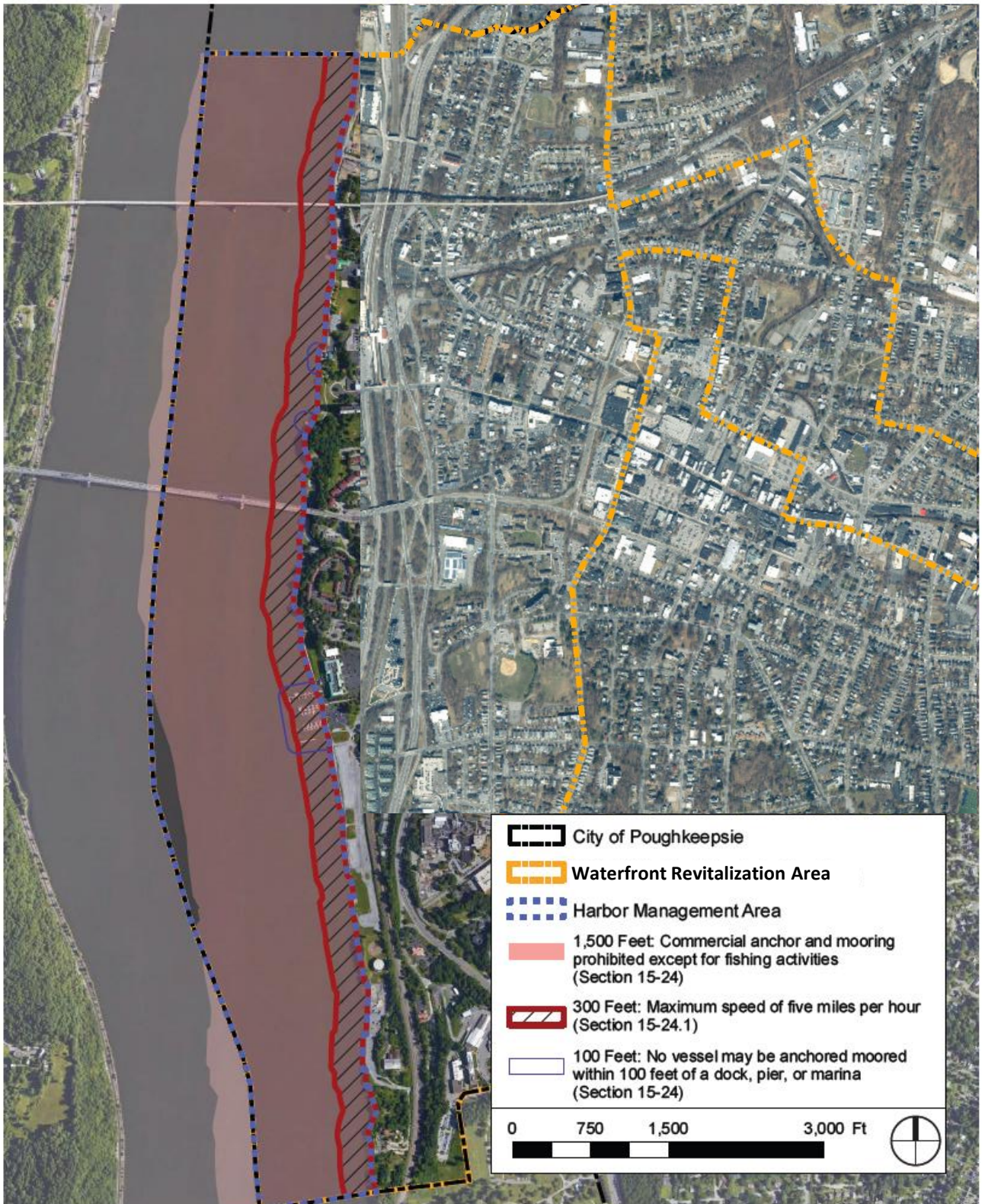


Figure A-IV-1: Harbor Management Area